



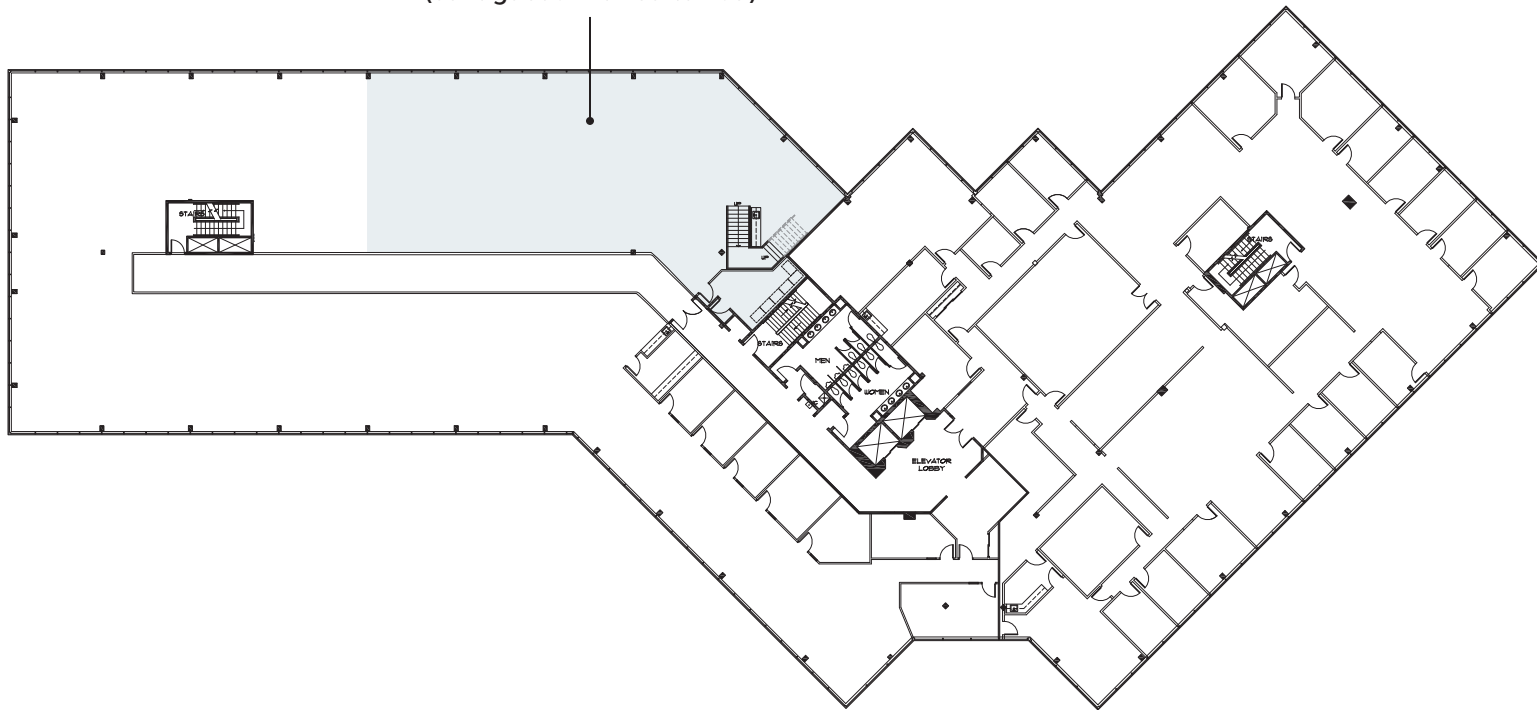
LINDEN
WOOD

Lindenwood, Malvern, PA

101 Lindenwood Drive

3rd floor plan

Suite 301
5,214 SF
(contiguous with Suite 405)



www.LindenwoodMalvern.com

Team
contacts

Adam Shute
+1 610 249 2272
adam.shute@am.jll.com

Chris Werner
+1 610 249 2265
chris.werner@am.jll.com

JLL | Jones Lang LaSalle Brokerage, Inc.
1235 Westlakes Drive, Suite 210, Berwyn, PA 19312
+1 610 249 2255

